

Robert Wheeler (Receiving Director) on the remodel:

“In a word, “space!” We don’t have ANY currently. There are days now when delivery shows up and we can barely fit it in. Then we struggle to process it. After the remodel, when the delivery comes in we should be able to unload it, then process it. Just having the space to move it from point A to point B for processing should make for less errors and stress. Having a dumbwaiter to move goods up and down from the basement will be a lot safer than carrying them up and down stairs. I know the staff is really looking forward to it!”

### Watch Us Grow: Expanding our Receiving

With the purchase of our new refrigerated truck we have expanded our intake of food. That growth has caused a need to expand our receiving area. With a little moving we will now have a much larger and more efficient receiving area. The showers and laundry will move to a new location, as will Ed’s office. We are excited about all these changes and look forward to how it will help with organization and efficiency. We will keep you up to date on the changes as we go!



We’re social!   

inside  
next issue:

Director’s Corner  
Upcoming Events  
Client Spotlight  
Remodel Updates



**The Window, Inc.**

223 South Main St.  
Goshen, IN 46526

WHAT’S INSIDE:



How can you help  
The Window  
through  
donations and  
volunteering?  
Client interview  
**PAGE 2**



Check out an  
interview with  
another nonprofit,  
upcoming events,  
and pantry needs.  
**PAGE 3**



A window into  
updates on  
renovations.  
**PAGE 4**



Our mission as a non-profit, faith-based organization, is to provide services to meet the essential needs of anyone with limited income.

# THE WINDOW VIEW

## Director’s Corner

**J. Edward Swartley, Director of The Window, Inc.**

Last year was an exciting year for us at The Window! We purchased a refrigerated truck in May that increased food intake from 2000 pounds to approximately 11,000 pounds a week. The increase in food coming into The Window caused a need for two new staff members: a



Director of Receiving and an Assistant Receiver. The biggest benefit? More food and more staff means that we are able to serve more people in the Goshen community. Last year we served 5,435 families and 21,768 individuals in the pantry. That is an increase of more than 1,000 families and over 4,000 individuals in 2019.

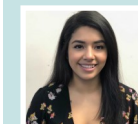
The Window Staff, The Window Board, and I thank you for your support as we serve the Goshen community.

-Ed Swartley

**FEBRUARY  
2020**

### NEW FACES

We want to take a moment to introduce our new staff members.



Niomi Lara,  
Administrative Assistant



Robert Wheeler,  
Receiving Director



Bill Rugg,  
Receiving Assistant



Jenny Yordy,  
Director of Development





## CLIENT SPOTLIGHT: JEREMY

Window and The Clubhouse and I walked away being touched by the way these two non-profits have supported this precious man. I feel like I don't have the space here to do his story justice, but let me say...it's worth sitting down with people you don't know that may have a different story than you do. Take the time to do that this week! The Clubhouse and The Window have come along side Jeremy in many ways. He mentioned over and over how both ministries make him feel a sense of belonging, like being with family. Jeremy receives rides to work, a steady job (that understands when he has medical issues), help finding housing, food, clothing, and so much more. It's helping him gain confidence. It's giving him purpose. It's making him feel loved. Jeremy works in our kitchen here at The Window. He also cooks at The Clubhouse and receives many requests for his specialty: cheese cake (Psst...he's a professionally trained chef). Jeremy is pretty special to us and we are grateful to work alongside him and The Clubhouse to change lives.

I sat down with Jeremy to chat about his experiences with The

## VOLUNTEER: So many opportunities

Many hands make light work. When we come together as a community to serve those who need it, we all win. This is your chance to get in on the fun!

### More information:

Most of our volunteer needs come in the form of a weekly commitment. We would love to use your gifts and strengths for good so look over this list or think of something we may not have considered. Our volunteer list is always changing, so if you'd like to help us weekly at The Window contact Lauren to ask about all the volunteer opportunities we have.

Contact Lauren at  
574.533.9680 ext. 203



### Volunteer Needs:

- **Cleaning-** Tu/Wed/Fr flexible hours. Clean bathrooms, showers, sweep, mop, take out trash.
- **Pantry Hosts**— Three different shifts: Tues. 9-10:30, Thurs. 4-5:30, Friday 1-4. Help individuals get groceries and carry them to vehicles.
- **Meals on Wheels-** 10:45am-12pm. Route regulars or sub drivers. You can determine your availability.

## Partnering with Others:

### ELKHART COUNTY CLUBHOUSE

The Window isn't a stand-alone organization in the community. We sat down with Cris Torres from The Clubhouse to chat about how The Window and The Clubhouse partner together to help our clients.



### Tell me a little about what the Clubhouse does.

The Clubhouse is a support community for adults with mental illness. We provide a judgement free zone for people to share their struggles, jobs at The Clubhouse to learn skills, and we partner in the community with businesses to do job training (see website for more details, -it's a pretty cool program). People who come to us usually have needs such as employment, housing and education. We work with multiple organizations to connect people with help for these needs.

### How do The Window and The Clubhouse Partner?

The Window provides jobs for some of our clients. We often serve some of the same people. Both organizations will refer clients to each other. The Window also helps The Clubhouse subsidize food for our meal programs. We work hard to keep a good relationship so we can serve our clients effectively.

### Why do you think it's so important for non-profits with a similar mission statement to partner together?

We are serving the same people. The two organizations have a similar goal. We both understand the struggles of our clients and have compassion for them. I have never heard a client say they had a bad experience at The Window.

## Donations are Always Welcome!

The Window runs on donations; in fact, our mission depends on them. We are in need of many items for our food pantry. We know some of you are experts in finding deals (we like crazy coupons)! You can put those skills to work for us! Thank you for considering a donation! Your generosity is extremely helpful. Pantry items help families and individuals in our community that need a little extra help to get dinner on the table.



### Pantry Needs:

- Canned Meat
- Canned Beans
- Canned Vegetables
- Tomato Products
- Canned Soup
- Pasta
- Cereal
- Canned Fruit
- Shampoo/Condit.
- Deodorant
- Soap

If you have donation questions please contact Robert 533-9860 x212.



### mark your calendar

## Upcoming Events

### Nelson's Chicken Fundraiser

**Date: February 22, 2020 10am-2pm**

Join us in the Eastlake (Ares) parking lot. 201 Chicago Ave. Goshen, IN 46526 We are selling chicken halves (\$7) and pit-tatoes (\$3.50) to raise money for our food pantry.

### March First Friday

**Date: March 6, 2020 4:30-7:30pm**

Come to The Window every First Friday for a meal. Meals are \$9 for adults and \$5 for children. These donations support our programs here at The Window.

### Haystacks Dinner

**March 19, 2020 4:30-7pm**

Join us for dinner (psst...you don't have to cook) at Waterford Mennonite Church for a haystacks dinner and dessert. Tickets for sale on our website or at The Window's front desk. Pre-sale tickets are \$9; \$10 at the door. Children are \$5 (ages 4-13).

### April First Friday

**April 3, 2020 4:30-7pm**

Another great First Friday dinner served at The Window. Meals are \$9/adult, \$5/child and will support all the programs at The Window. Please bring your family and friends!

### Volunteer Appreciation Breakfast

**April 18, 2020 8am**

We love our volunteers! Our operations here can't continue without them. To show our appreciation we are planning a volunteer breakfast here at The Window. Invitations will be on their way shortly.

## Donor Spotlight

Each year The Window gives a Supporter of the Year award.

During 2019 we were the recipients of so much generosity from businesses and individuals in our neighborhood.

We have chosen **RMH**

**Insurance**, Reliance-Menno-

Hursh, as the 2019 Supporter

of the year. Thank you RMH

for your faithfulness in

supporting us as we support

our community. Reliance-

Menno-Hursh Insurance Group

specializes in Auto,

Homeowners, Life,

Commercial, Business, Farm,

and Crop Insurance.



## Support: Financial Sponsors are Vital

We rely on the monetary support of local businesses and individuals to keep the programs at The Window going. These programs are a huge support to our clients as they navigate life challenges.

The Window provides a host of services to the folks that enter our doors on a daily basis. Clients can receive a hot lunch, Meals on Wheels, a boxed lunch, clothing closet, use of shower and laundry facilities, faxing, printing, phone usage and referrals to other organizations we partner with. The coordination of all of these services along with receiving all

of the donations, cooking meals, organizing clothes and food requires a lot of resources. This is where you can help! Would you be willing to partner with us to serve those in our community that are in need? We would love to share more about how you can help.



Please contact us here at  
jyordy@thewindowinc.com

### Want to Make a Donation?

Make checks payable to The Window or donate on our website.

MC\_\_\_ VISA\_\_\_ DISC\_\_\_

Card # \_\_\_\_\_

Expiration \_\_\_\_\_

CIV/SEC# \_\_\_\_\_

ZIP \_\_\_\_\_

Name \_\_\_\_\_

Address \_\_\_\_\_

Phone: \_\_\_\_\_

\_\_\_Katie's Kit\_\_\_ Lunch Box\_\_\_ Mls. On Wheels

\_\_\_ The Pantry \_\_\_ Clothes Closet

Please return this stub with your donation. You will be issued a tax receipt in the mail.